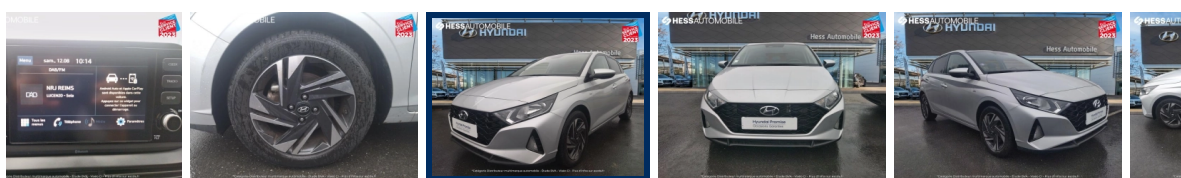




*Catégorie Distributeur multimarque automobile - Étude BVA - Viséo CI - Plus d'infos sur escda.fr



HYUNDAI i20

1.0 T-GDi 100ch Hybrid Intuitive

11 720 km | 2021 | Essence | Manuelle

Classe énergétique **B**

Prix **16 999 €^{TTC}**

Financement **A partir de 368 €^{TTC} /mois**

Informations

Reprise

Kilométrage 11 720 km	Mise en circulation 12/15/2021	Type de carburant Essence
Puissance 73 kW/100 CV	Boîte de vitesse Manuelle	Cylindrée 1.0 L
Portes 5	Sièges 5	Emission CO2 115 g/km
Consommation mixte 5	Couleur extérieure Sleek Silver Métal	Crit'Air 1
Contrôle Technique		

We use cookies

We and our partners use cookies and similar technologies to optimize our website navigation, to analyze and improve the use of our website and services and to show advertising which are relevant for you based on your browsing habits. By clicking "Accept All Cookies", you agree to the storage of cookies on your device and the corresponding processing of your data. You may decline all not